



bajadesigns[®]
THE SCIENTISTS OF LIGHTING

**Kawasaki KRX 1000 Roof Kit
(44-7196, 44-7197, 44-7198)**



2950 Norman Strasse San Marcos, CA 92069

Phone 760-560-2252 X3 • Fax 760-560-0383

info@bajadesigns.com • www.bajadesigns.com



baja designs[®]
THE SCIENTISTS OF LIGHTING

LIMITED LIFETIME WARRANTY

Baja Designs proudly offers a LIFETIME WARRANTY against manufacturer's defect on all the products that we manufacture.

These are comprehensive warranties; other than the exclusions below – you're covered. If your LED or HID bulb burns out, you're covered. Additionally, cutting off our connector or changing your lenses does not automatically void your warranty.

Exclusions:

Installation errors, abuse, misuse, or crash damage. You must be the original owner of the product and can supply proof of purchase.

Baja Designs manufactures its own products as well as resells products manufactured by others. Baja Designs makes no express or implied warranties on products not manufactured by Baja Designs including without limitation any warranties or merchantability and fitness for a purpose. We will, however, pass on all warranties made by the manufacturer, who has sole responsibility for performing such warranties.

Baja Designs will pay the freight if your product is less than 90 days old, otherwise defective products must be returned to Baja Designs, Inc., freight prepaid. At our option, we will repair or replace items in question and return them at no charge. If the identical product is no longer available, we will replace it with a similar product of equal value. Baja Designs Inc. will not be responsible for any indirect or consequential damages in connection with defective merchandise.

Items purchased through a Baja Designs authorized dealer must be returned through the dealer. Only available on LED auxiliary lights and product must be in sellable condition at MSRP. Product that has been damaged in any way after the original purchase date will be excluded from this guarantee.

Indemnification:

Buyer hereby acknowledges off-roading, racing and driving at night are dangerous activities and that the products and/or supplies purchased from Baja Designs are used in an inherently dangerous activity that may endanger life and limb; and in no event shall the seller, or seller's heirs and assigns, be held liable for consequential damages, nor shall seller's liability on any claim for damages arising out of or connected with the sale, delivery, or use of purchased products and/or supplies exceed the purchase price of the products and/or supplies.

Buyer is responsible for ensuring that it uses the products (and its vehicle) in accordance with all applicable laws, regulations, guidelines, and standards of care. Buyer acknowledges that some products may only be used when off-roading, and Buyer will comply with all vehicle and road safety guidelines. Buyer is solely responsible for (and will indemnify and hold Bestop harmless for) any claims, losses, damages, fines, fees, costs, or other amounts arising out of Buyer's non-compliance with these provisions.

***For a color copy of instructions, visit your vehicle specific application on BajaDesigns.com ***

Required Tool(s):

- Sockets: 8mm, 10mm, 7/16",
- Wrenches: 10mm, 7/16"
- Misc: Zip ties, Phillips head screwdriver, trim removal tool, flat head screwdriver, diagonal cutters, T20 Torx, 5/32" Hex tools, 3/16" Hex tools, Rivet Nut installation tool

Parts List:

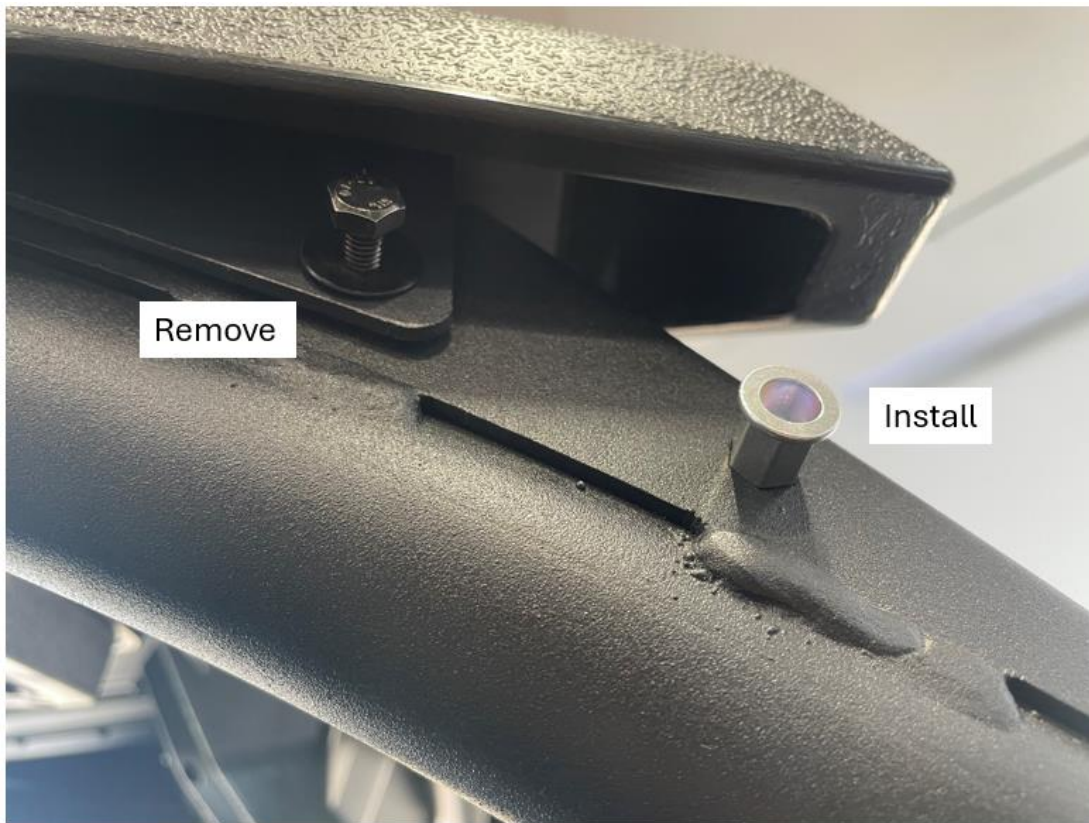
 <p>(44-9452) (Qty: 1) 2024-On, Kawasaki, Teryx, KRX Roof Bracket Driver Side</p>	 <p>(44-9453) (Qty: 1) 2024-On, Kawasaki, Teryx, KRX Roof Bracket Passenger Side</p>	 <p>(64-0313) (Qty: 1) Wiring Harness, Can-Am, Maverick R, S8/OnX6/Linkable Harness</p>	 <p>(20-1139) (Qty: 4) Hex Rivet Nut, Zinc Plated Steel, M6X1 MTL. THCK. (1.0mm- 3.5mm)</p>
 <p>(20-1612) (Qty: 10) Zip Tie</p>	 <p>(20-1143) (Qty: 4) Hardware, M6X1X20 Hex Head Screw 18-8 SS</p>	 <p>(Qty: 8) Hardware, M6 Flat Washer 4X Raw Stainless 4X Black Stainless</p>	 <p>(20-1282) (Qty: 4) Hardware, 1/4-20 Flat Washer SS</p>
 <p>(Light Bar/Linkable) (Qty: 1)</p>	 <p>(74-8002) (Qty: 1) XL Linkable, Pre- load kit Linkable ONLY</p>	 <p>(20-1012) (Qty: 4) Hardware, 1/4-20 x 5/8" SS</p>	 <p>(64-0169) (Qty: 1) XL/S8/OnX6+ 3-Pin, 5' Extension</p>

To begin, make sure the vehicle is in park, on level ground and the parking brake is engaged.

Step 1: A-pillar Disassembly

Remove bolt pictured below using a 10mm socket. Some roof configurations may require further disassembly to access this location.

Some trims may not have this bolt installed



Step 2: Rivet installation

Install the provided rivets at the hex cut out locations using a rivet nut tool. See image above.

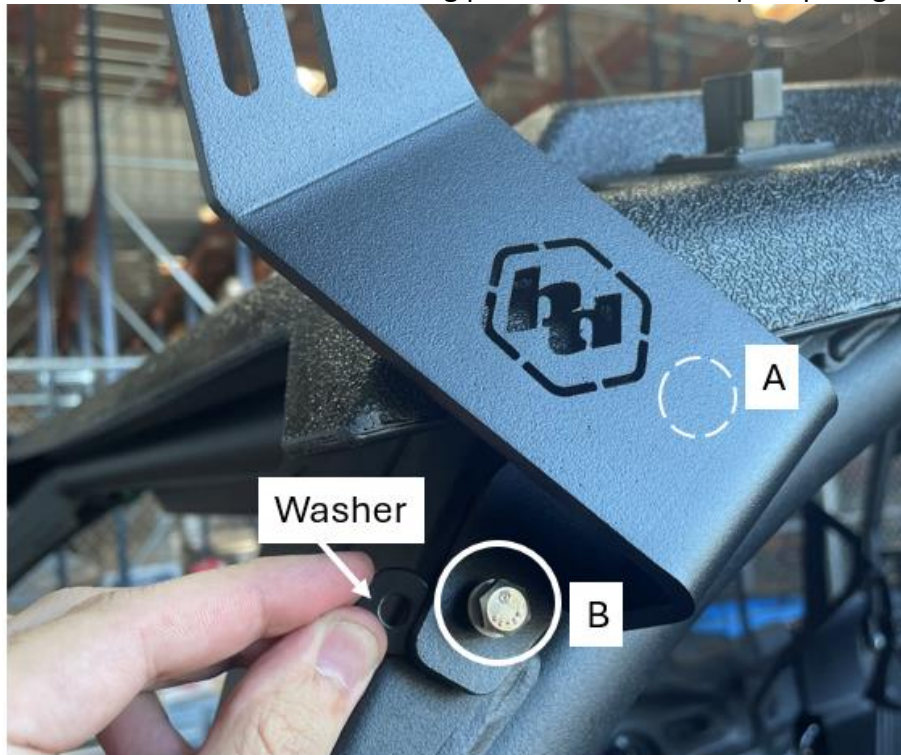
Some trim levels will need 2 rivets (per side) instead of the one pictured above

Step 3: Bracket Installation

Install the bracket beginning with fastener A and proceeding with fastener B. Use the 4X M6 bolts/washers provided and a 10mm socket.

Install the provided black washer between the bracket and the rivet at fastener location B

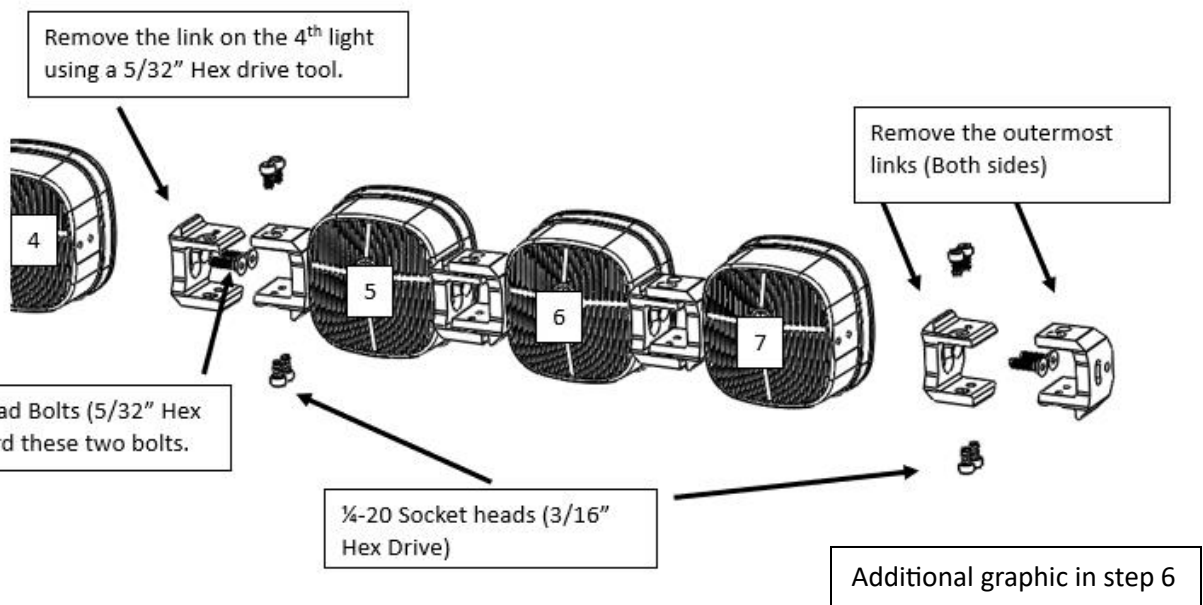
Some trims may need a washer under **BOTH** mounting points to maintain equal spacing from the rivet.



Step 4: Light preparation (7XL Linkable ONLY otherwise skip to step 7)

Remove the outermost pair of links (both sides) using a 5/32" and 3/16" Hex Drive Allen key.

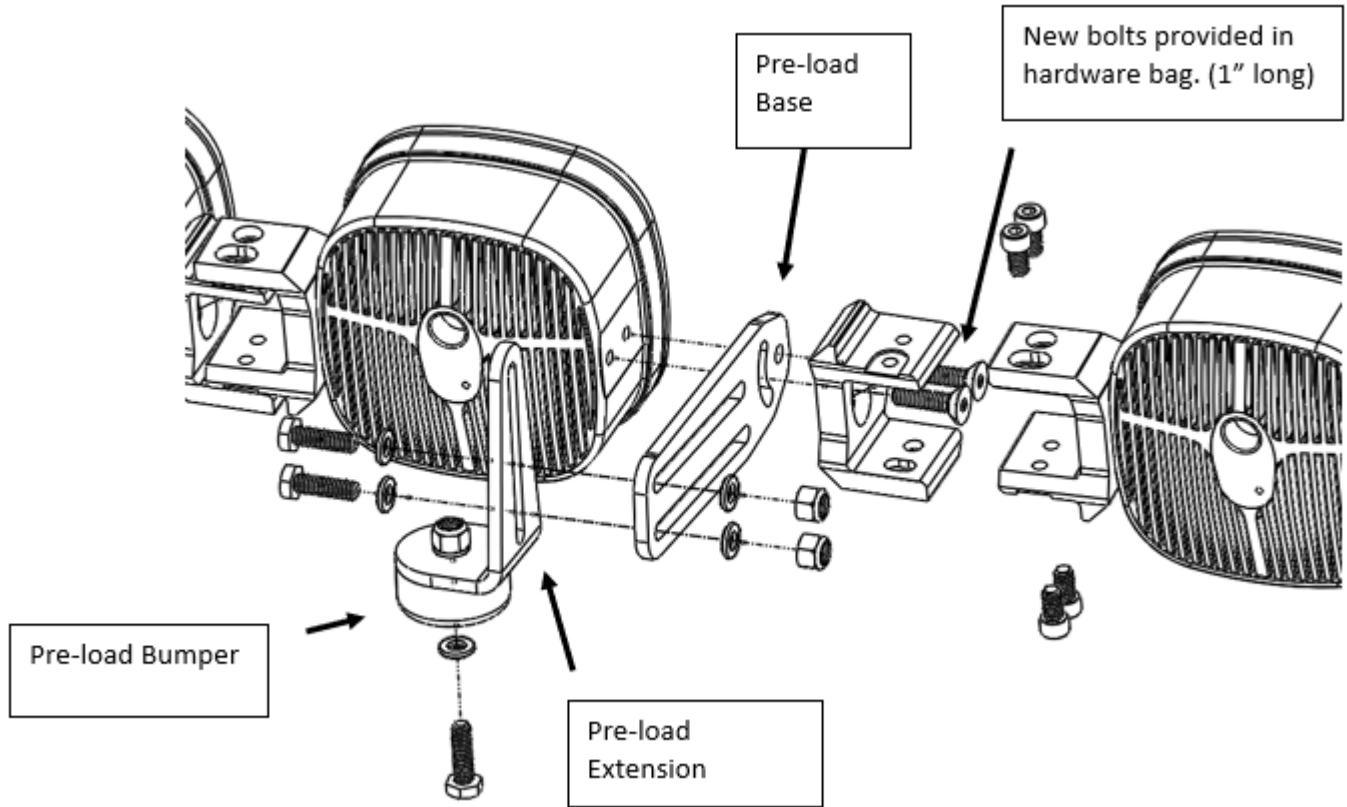
Separate the Linkable between the 4th and the 5th light (Reference diagram below) using a 3/16" Hex Drive.



Step 5: Assemble the supplied pre-load kit

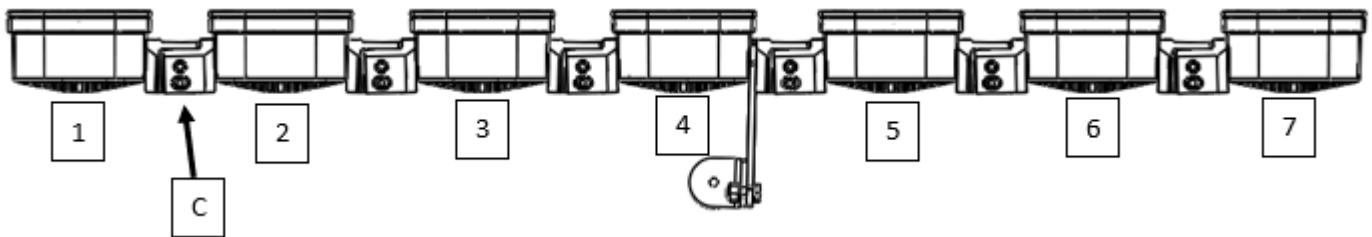
Using a 5/32" Hex Drive Allen key and the 1/4-20 X 1" Flat head bolts provided in the Pre-load kit hardware, sandwich the pre-load base as shown below.

Using a 7/16 Wrench and socket. Assemble the pre-load bumper and preload extension onto the pre-load base as shown below. Use the hardware provided in the pre-load kit hardware.



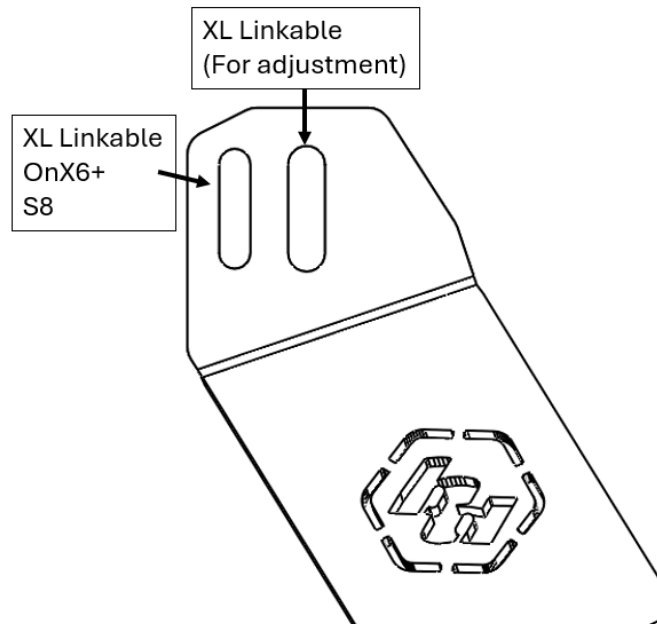
Step 6: Before fully tightening your pre-load bracket:

Loosen all socket head bolts (C) using a 3/16" Drive Hex along the length of the Linkable and lay the Linkable face down on a soft surface. Make sure the linkable is completely straight then re-tighten all bolts.



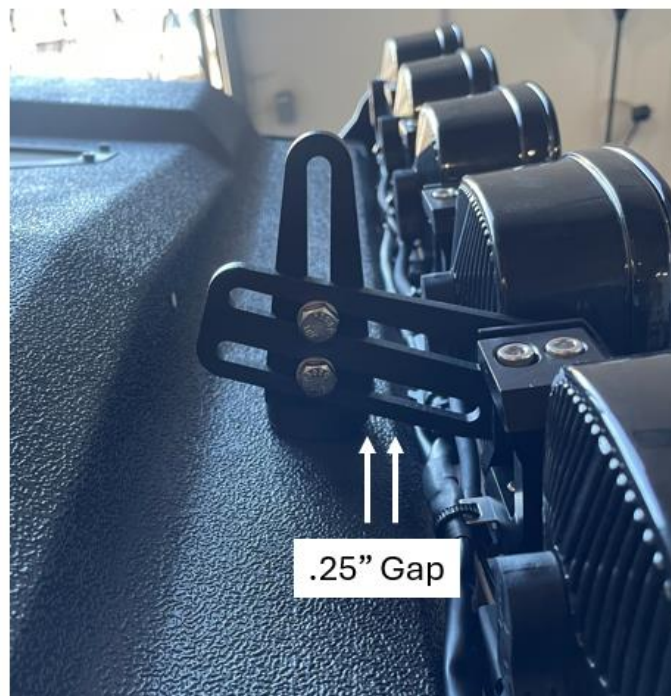
Step 7: Install your light bar/ Linkable

Bolt up the light bar/Linkable across the roof using the two brackets previously installed. Use a 7/16 Socket to install the hardware included with the light bar or Linkable (1/4-20 X 5/8 Hex Bolt and 1/4-20 Washers). Either slot can be used for Onx6+/S8 to fit different roof configurations.



Step 8: XL Linkable ONLY

Adjust the preload bracket such that it sits above the tube cage. Roughly .25" inch behind the edge in the plastic roof. Apply upward pressure such that the preload bumper holds the linkage level before tightening. For vehicles with a different roof or no roof place the preload bump as close to the tube cage as possible.



Step 9: Adjustments

Make sure the light bar/ linkable is level. Tighten down all hardware.



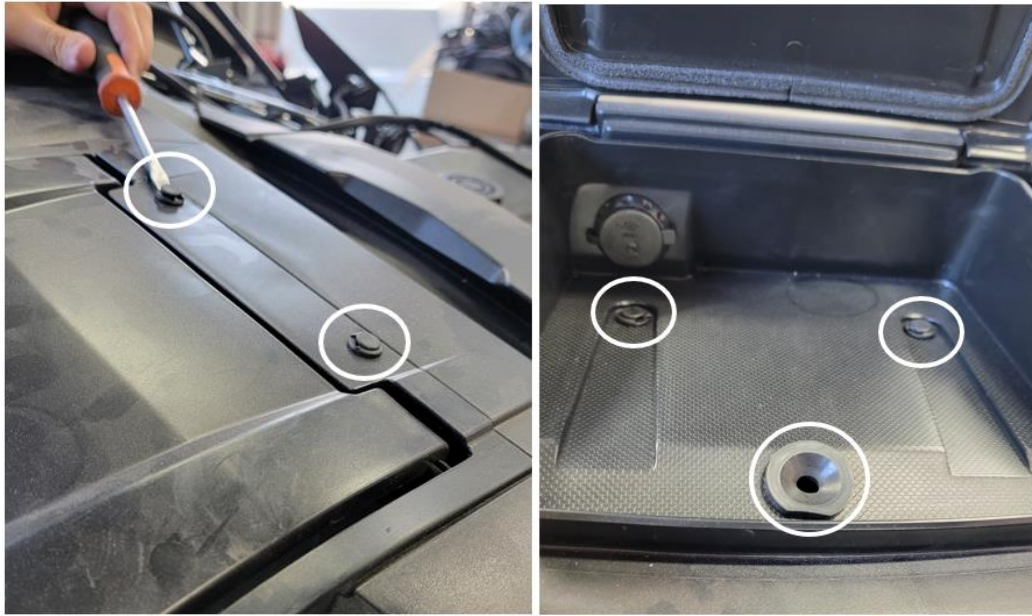
Step 10: Remove center dashboard

Use a Phillips head screwdriver to remove the two screws holding the dashboard in place.



Step 11: Remove center dashboard

Remove the 2X push pin fasteners outlined below using a flathead screwdriver. Open the lid above the infotainment screen and release the two push pin fasteners and grommet using a flat head screwdriver.



Step 12: Completely remove dashboard center panel

Remove the center dashboard by pulling it to the side. Make sure to not strain any electrical connections on the back of the panel.



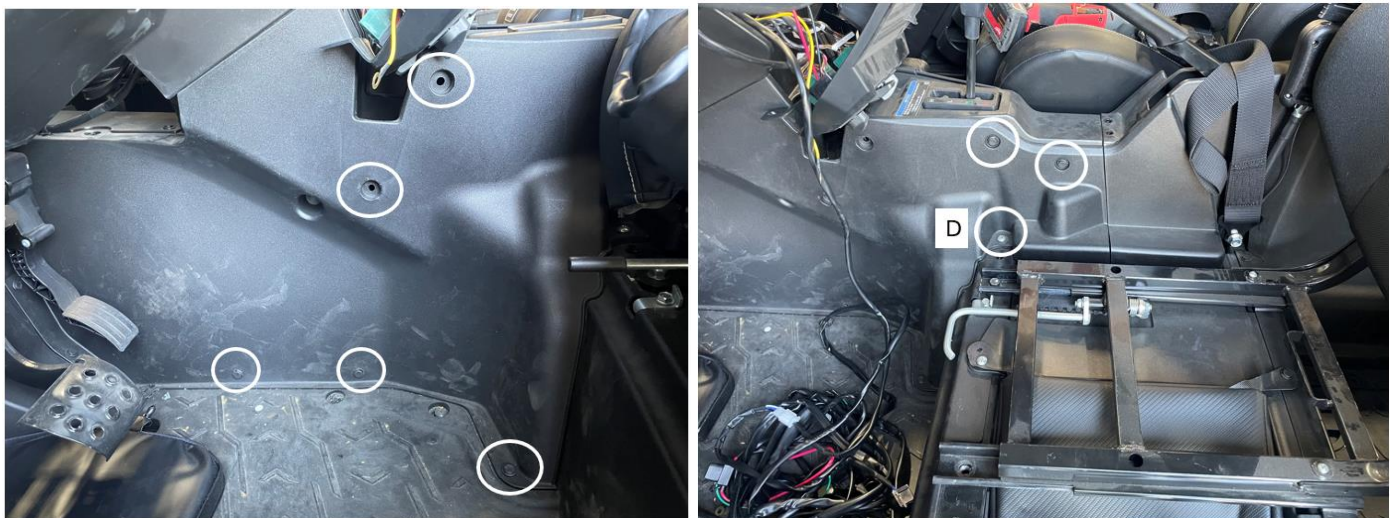
Step 13: Removing seats

Remove seat bottom by releasing the latch beneath the front and pulling up. Do this for all seats.



Step 14: Remove shifter trim

Remove the 7X push pin fasteners using a flat head screwdriver. Remove the screw (D) using a Phillips screwdriver. Repeat on the other side.



Step 15: Loosening Trim panel around E-brake

Use a flathead screwdriver to remove the 2X push pin fasteners located next to the E-brake handle.



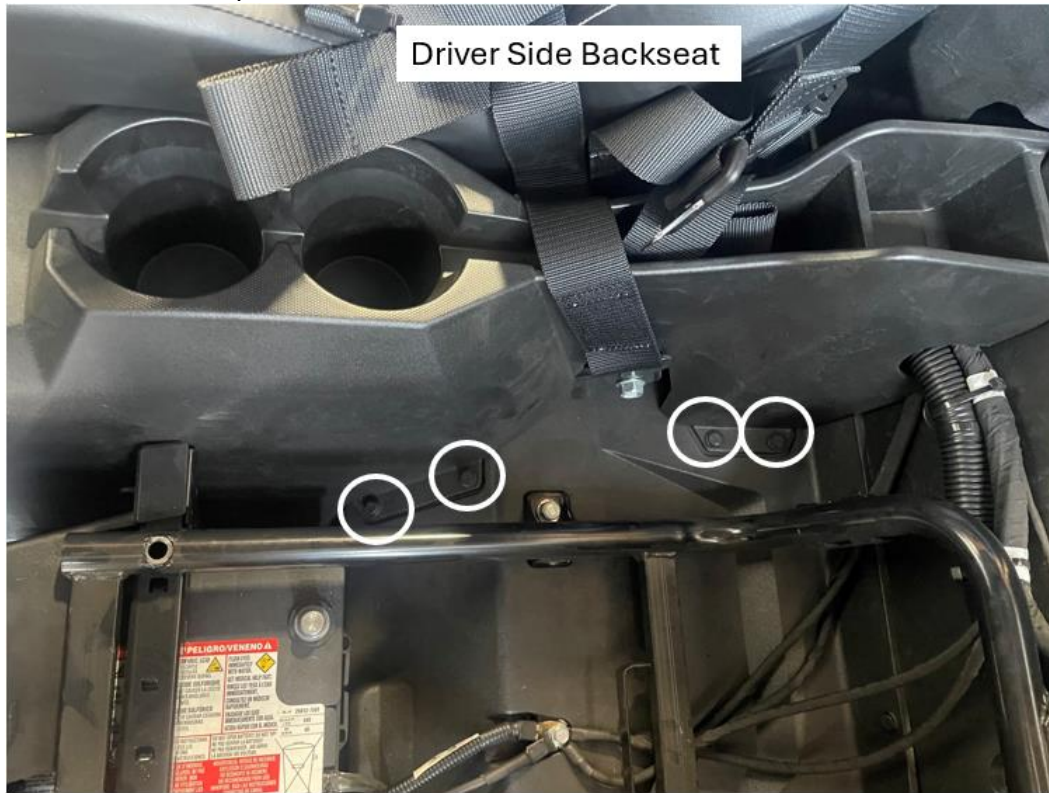
Step 16: Loosening trim panel around E-brake

Use a flathead screwdriver to remove the 5X push pin fasteners on EACH side of the trim panel shown below. Remove the whole trim panel from the vehicle.



Step 17: Loosening backseat center trim panel

Use a flathead screwdriver to remove the 4X push pin fasteners on EACH side of the trim panel shown below. Remove the whole trim panel from the vehicle.



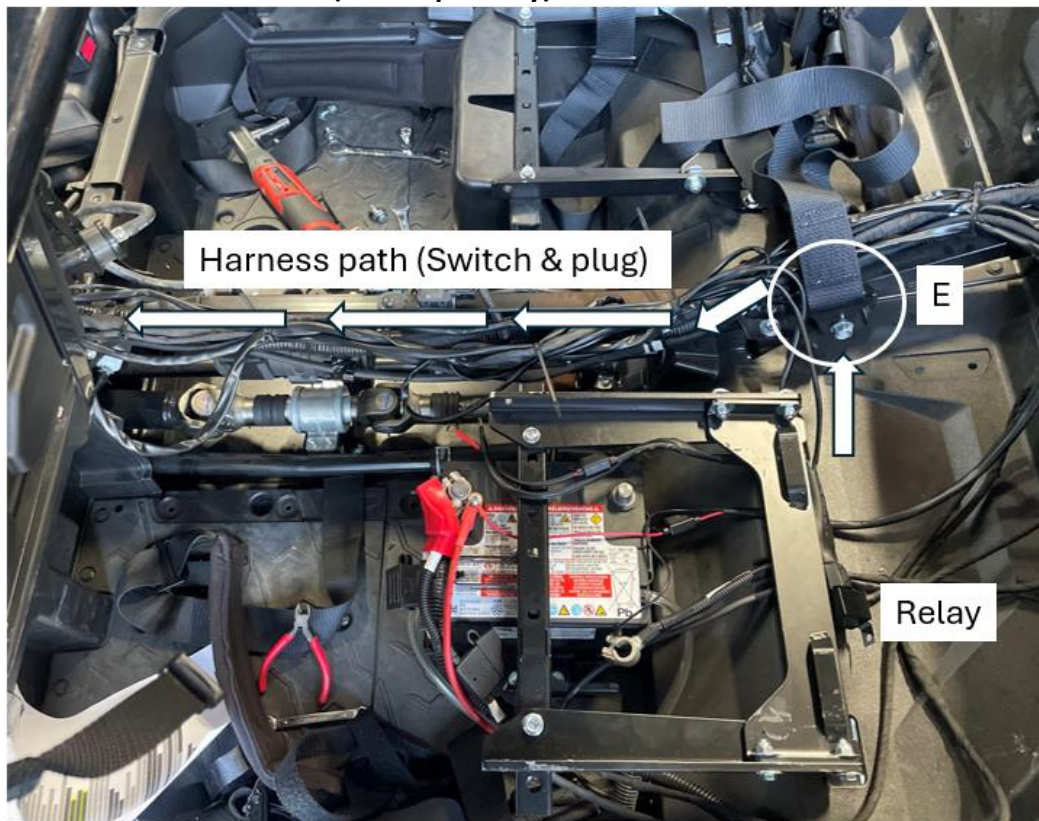
Step 18: Remove battery trim panel

Remove the trim panel surrounding the battery by removing the 3X quarter turn fasteners.



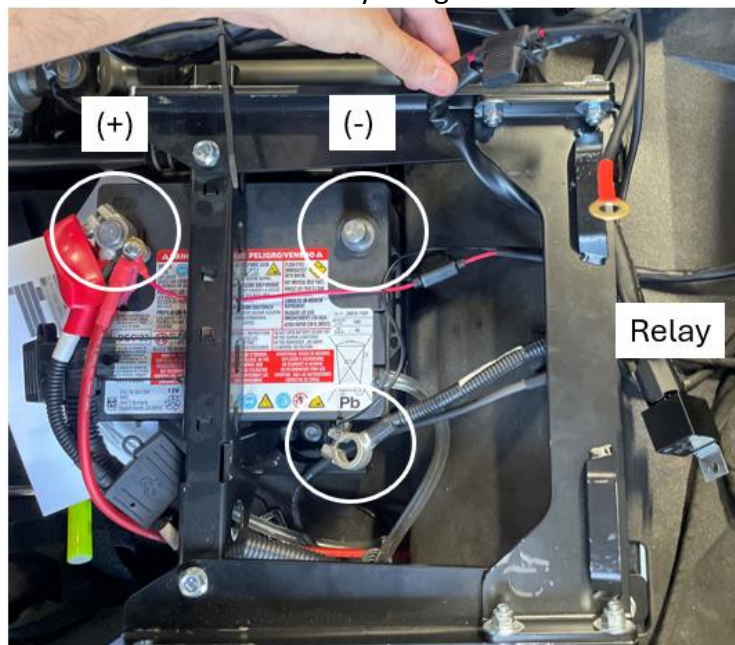
Step 19: Harness placement

Secure the provided harness relay at the location pictured below and route the wires into the harness bundle at location E to make use of the trim panel opening. **For customers looking to reuse the switch in the Hifonics roof use harness 64-0163 (Sold separately).**



Step 20: Harness connection to the battery

Connect the harness ring terminal leads to the battery using a 10mm and 8mm socket.



Step 21: Harness routing

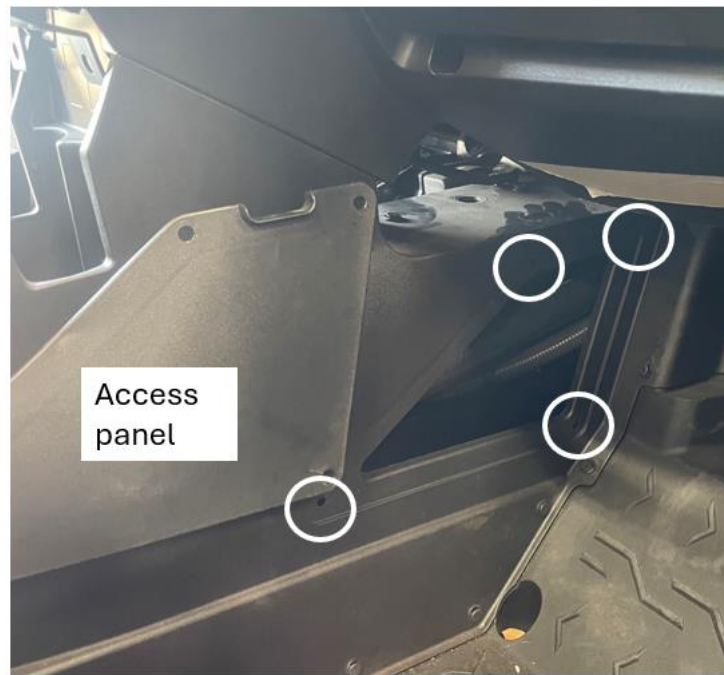
Run the harness switch lead and 3-pin connector beneath the e-brake trim panel as shown (from the driver side).

Cross the wires over to the passenger side once they are beneath the shifter if passage is blocked



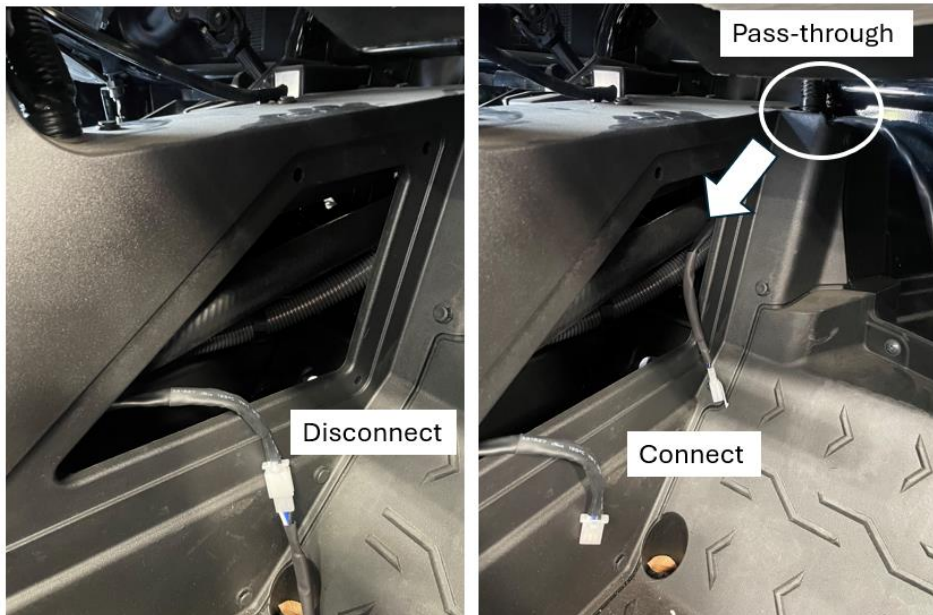
Step 22: Harness routing

Remove the 4X push pin fasteners using a flat head screwdriver. Remove the access panel on the passenger side.



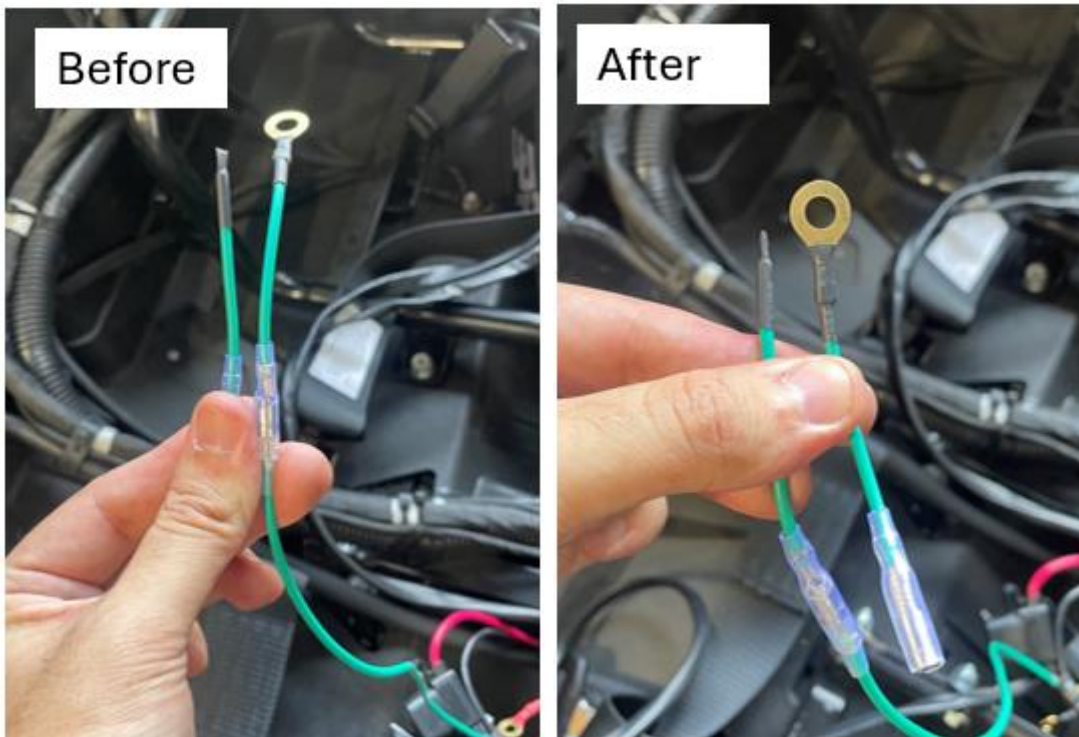
Step 23: Harness routing

Pull the harnesses through the access panel opening. Disconnect the white connector as seen below. Take the short length and run it through the pass-through, white connector first (downward). Reconnect the white connector.



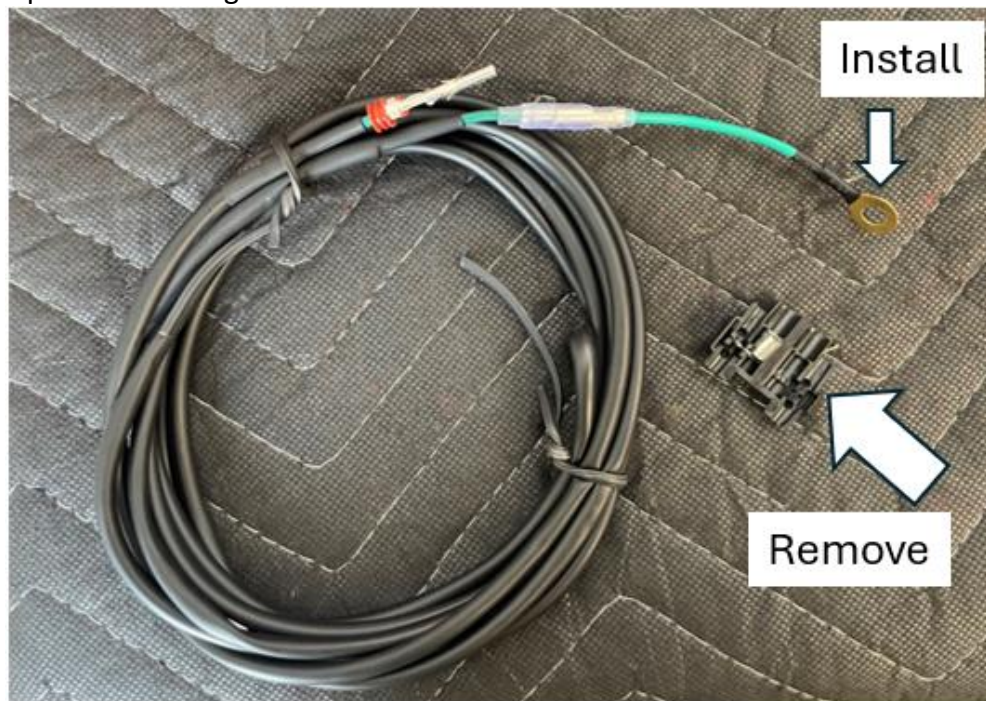
Step 24: Harness preparation

Remove the ring terminal end from the 64-0313 harness (near the battery ring terminals). Install the provided heat shrunk dead end.



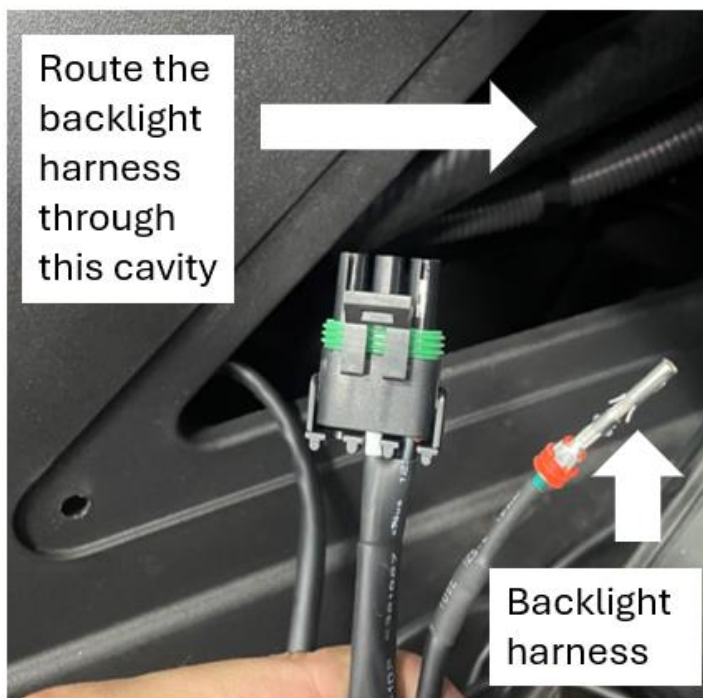
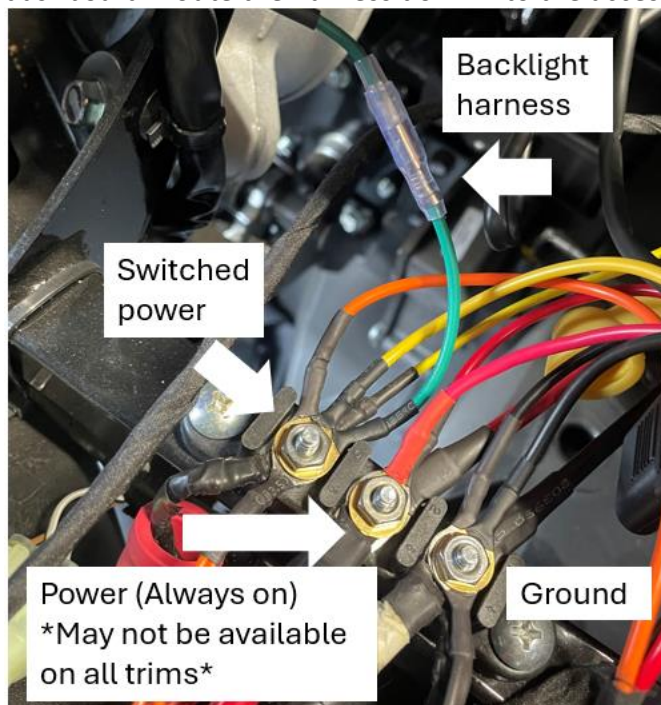
Step 25: Backlight Integration (S8 ONLY, otherwise skip to step 27)

Remove the splice connector from the backlight harness. Take the terminal ring end from the last step and install it onto the provided backlight harness as seen below.



Step 26: Backlight harness routing

Install the ring terminal end onto the switched power post outlined below on the busbar beneath the dashboard. Route the harness down into the access panel cavity following the harness from step 22.



Step 27: Connector pinning

Remove the green wire from the connector and replace it with the new S8 backlight harness as seen to the right.

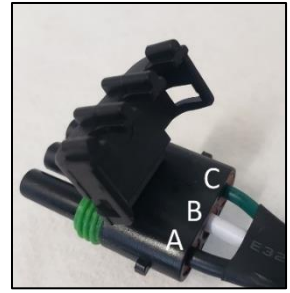
The connector is labeled with A-B-C

The pinout is as follows:

A- Black/Ground

B- White/ Power

C- Green/backlight



Step 28: Harness routing

Run the 5' extension provided down the passenger side A-pillar and through the hole at the base of the A-pillar. Pull the harness into the footwell and connect it to your harness from step 26.

*Alternatively, run the extension through the cage. Removing the connector is required. Use the legend in step 26 when re-installing the connector. *



Step 29: Harness routing

Connect the extension to the S8/Onx6+/XL Linkable. Tie away all slack using the zip ties provided.

* The connector for the light bar/linkable will need to roughly be in this location to allow enough length to reach the battery in the rear. *



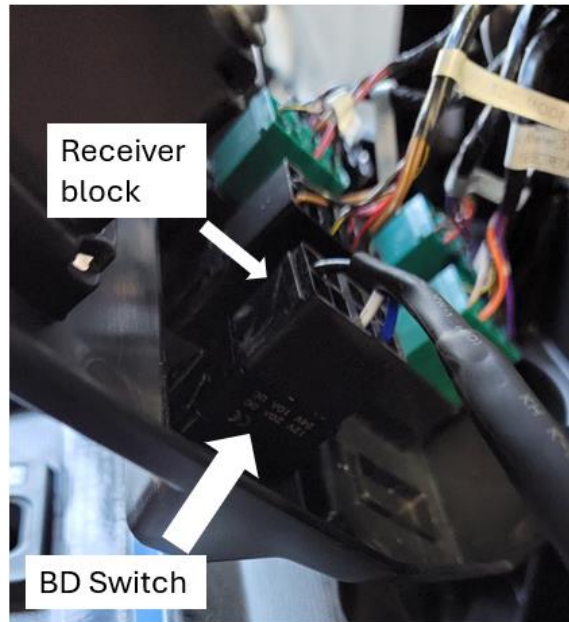
Step 30: Button Installation (To re-use the switch on the Hifonics roof skip to step 32).

Remove the knock-out panel from the central dashboard panel. Install the switch.



Step 31: Button installation

Pull the switch harness up into the cavity behind the dashboard. Connect the switch receiver block onto the exposed pins on the rocker switch.



Step 32: Trigger harness routing

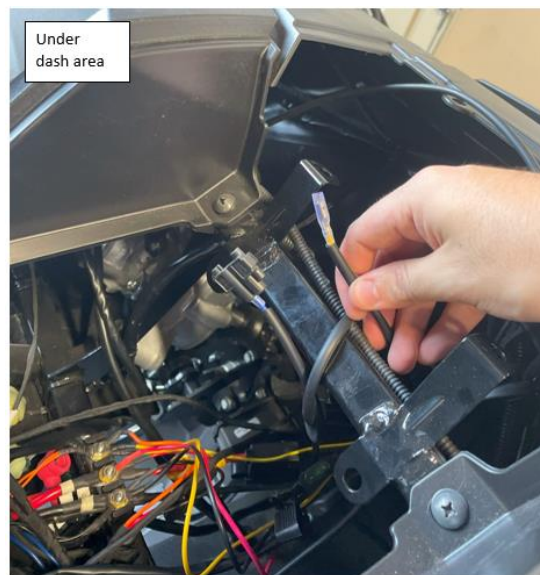
To reuse the OEM switch in the Hifonics roof. The following are **required**:

64-0163 QTY: 1 **Sold Separately**

64-0237 QTY: 1 **Sold Separately**

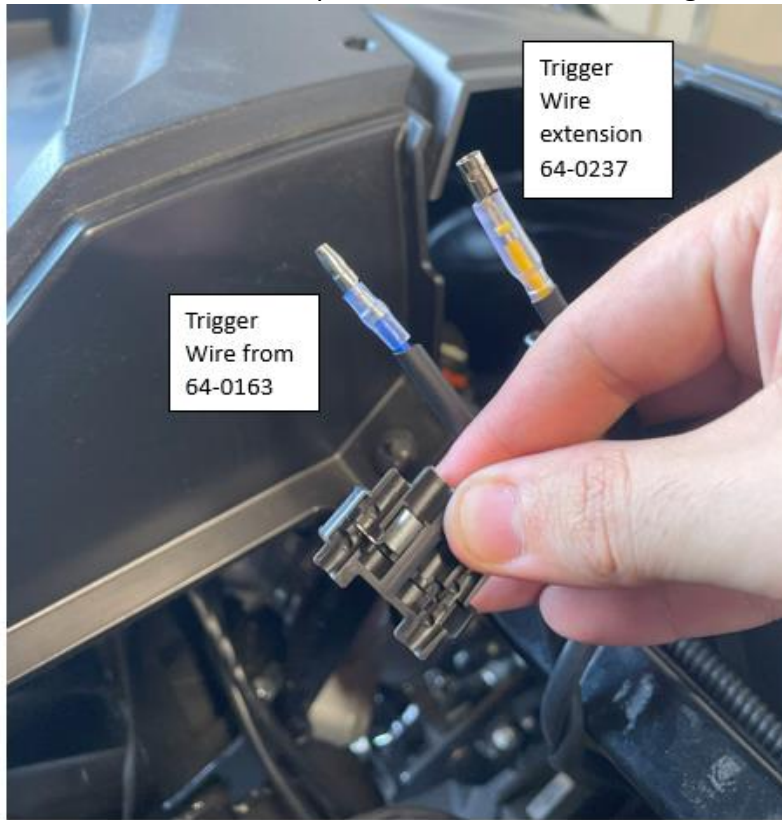
Step 33: Harness routing

Follow steps 19-29 using 64-0163 instead. Run the trigger wire to the area beneath the dash pictured in step 25.



Step 34: Extension addition/routing

Add the extension (64-0237) to the trigger harness lead and route it up the driver side A-pillar following the OEM harness or zip tie to the outside of the cage.



Step 35: Trigger wire routing

Run the trigger wire alongside the OEM harness into the Hifonics roof control panel.



Step 36: Remove Hifonics Bezel

Remove 8X fasteners circled below using a T20 Torx bit.



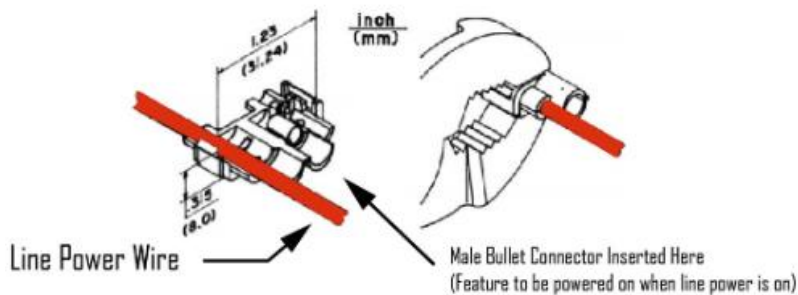
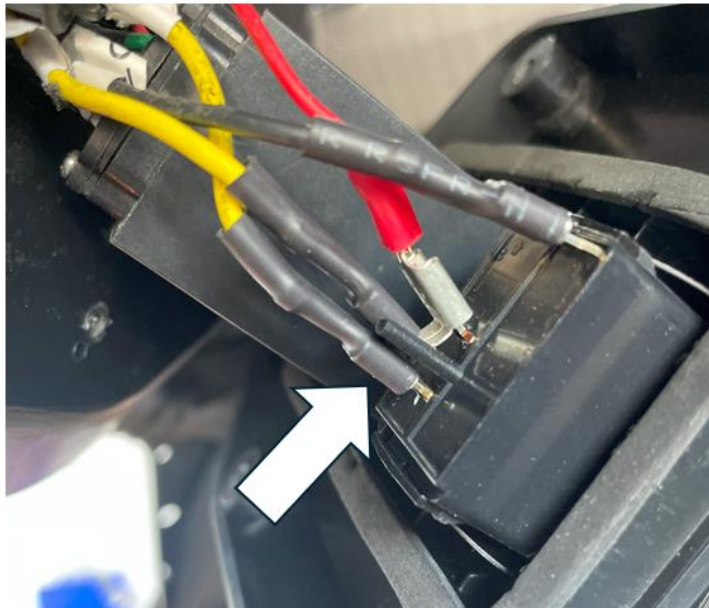
Step 37: Remove Hifonics Control system

Use a Phillips screwdriver to remove 4X screws securing the control panel to the roof.



Step 38: Connect trigger wire

Pull out the control panel and splice the trigger wire into the wire seen below.



Step 39: Test

Test all lights, backlights and switches.

Step 40: Reinstall

Reinstall all trim panels in reverse. Tie away all harness slack.

*Tie all wires away from sharp, hot, and/or rotating components.

* Re-torque all the fasteners after 100 miles.

*Your install is now complete! Thank you for choosing Baja Designs.